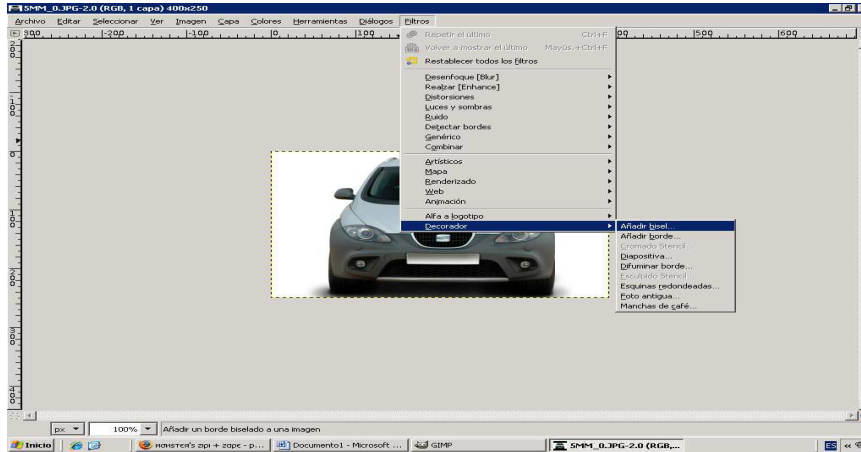
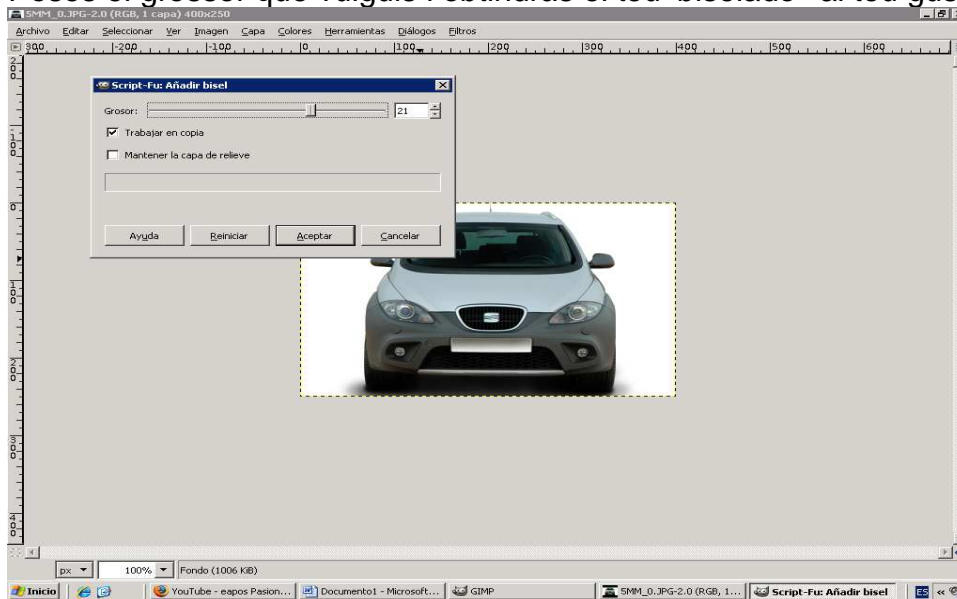


# DECORADOR DEL GIMP!

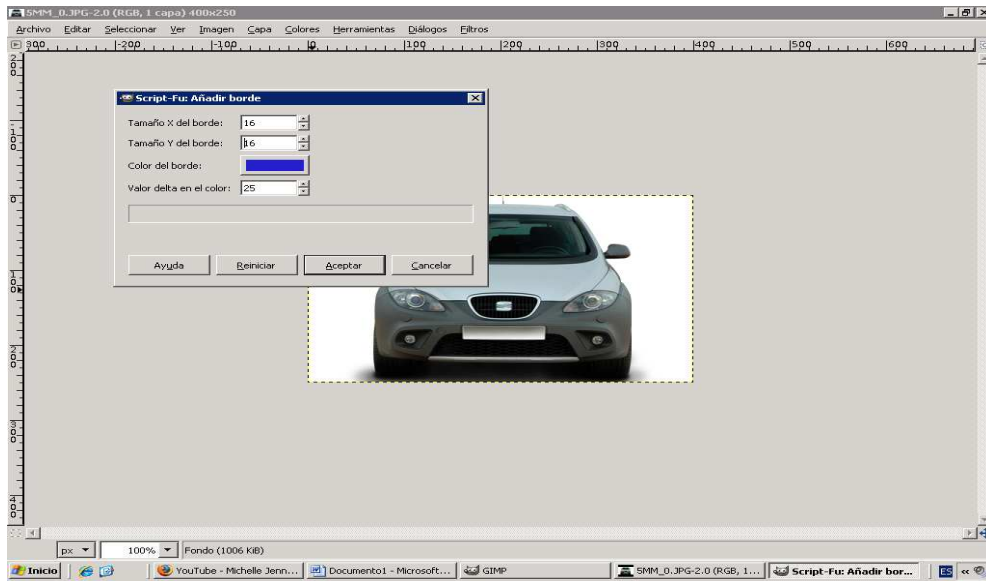
## 1. Afagir bisel:



Poses el grosor que vulguis i obtindràs el teu 'biselado' al teu gust:

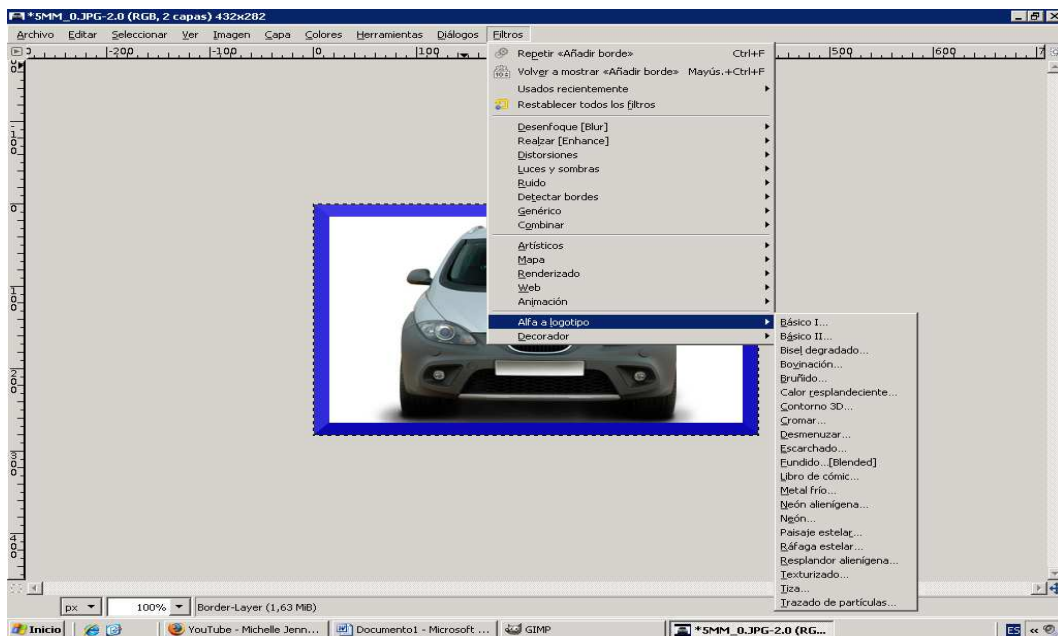


2. Afegir "borde", vas al decorador i cliques sobre "Añadir borde", i et sortirà aquesta pantalleta:

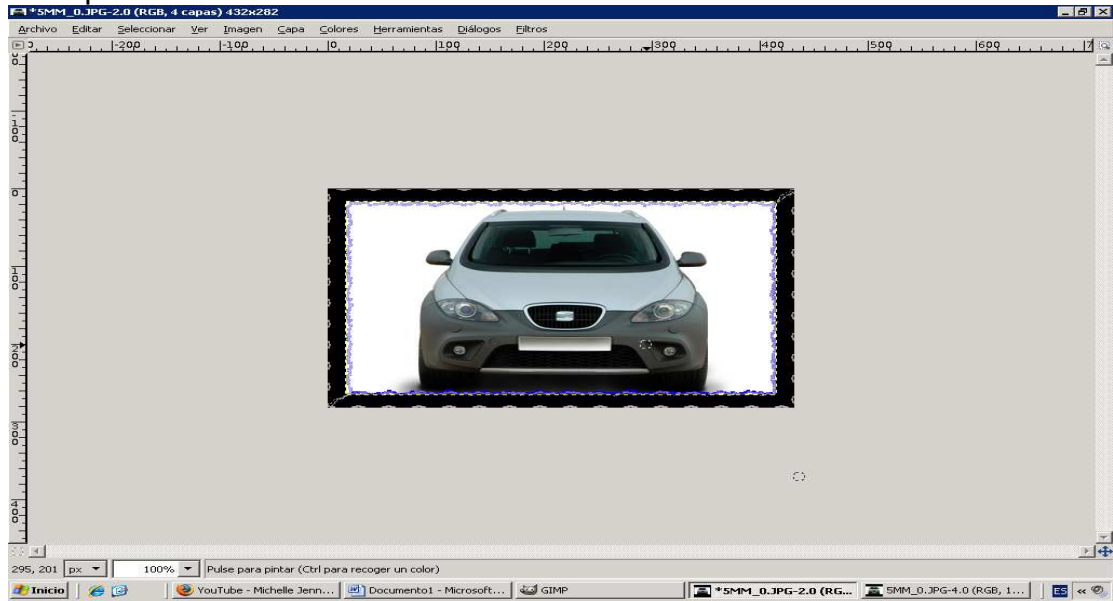


Poses el tamany que tu vulguis i se't posarà el "borde".

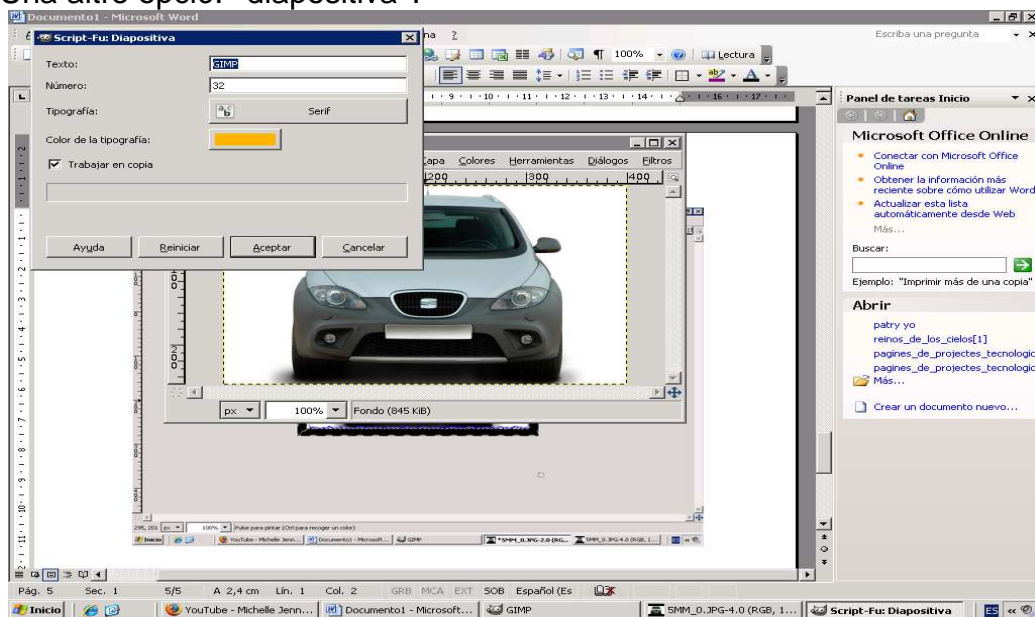
3. "Alfa logotipo": tens varies opcions per al "borde", ves probant i ho poses al teu gust.



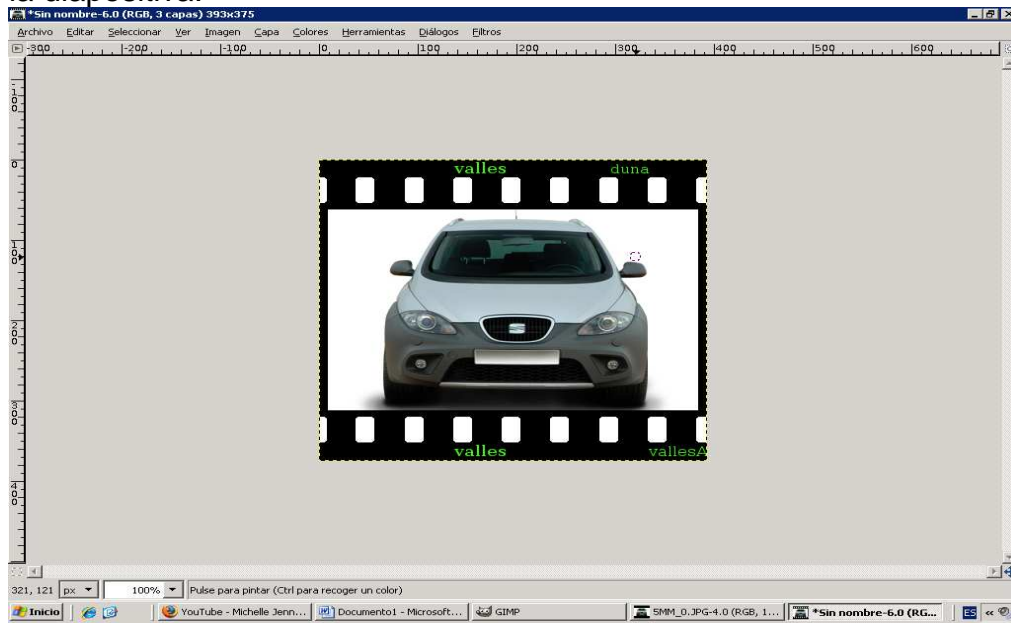
Una opció: "tiza".



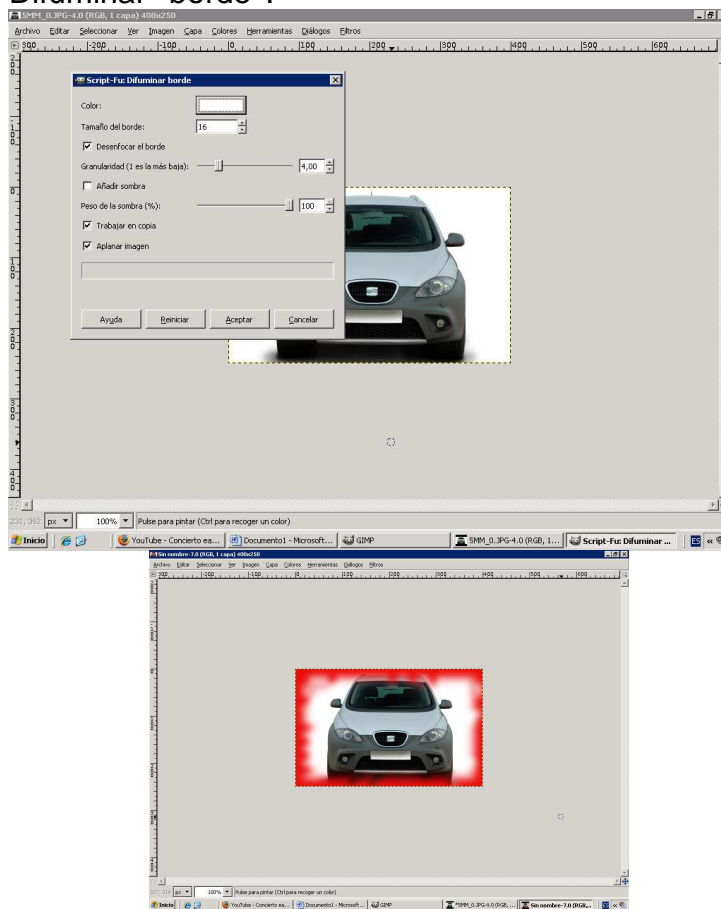
Una altre opció: "diapositiva".



En el text i numero pots posar al que tu vulguis, després sortirà reflectida a la diapositiva:

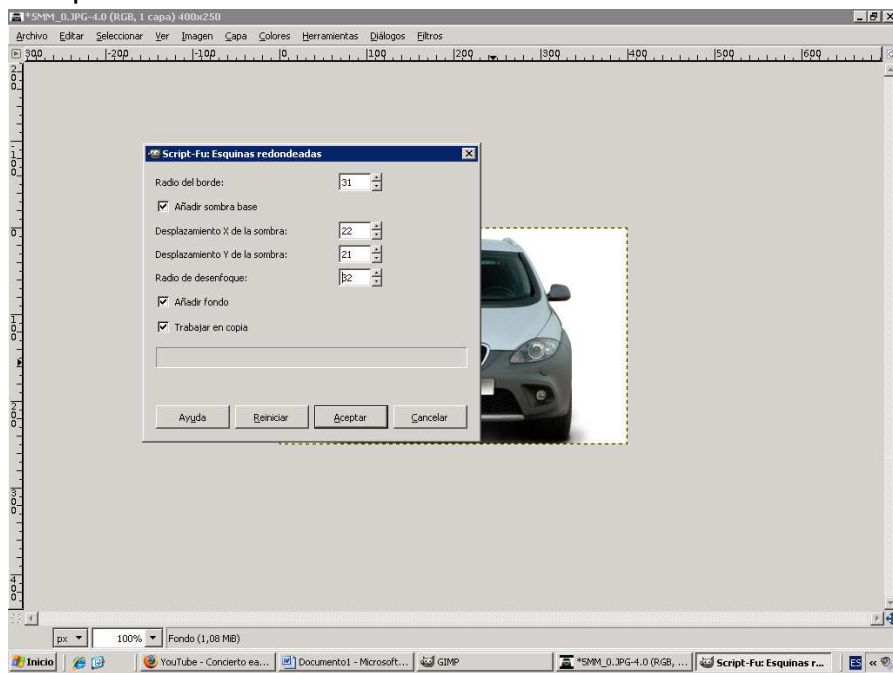


Difuminar "borde":

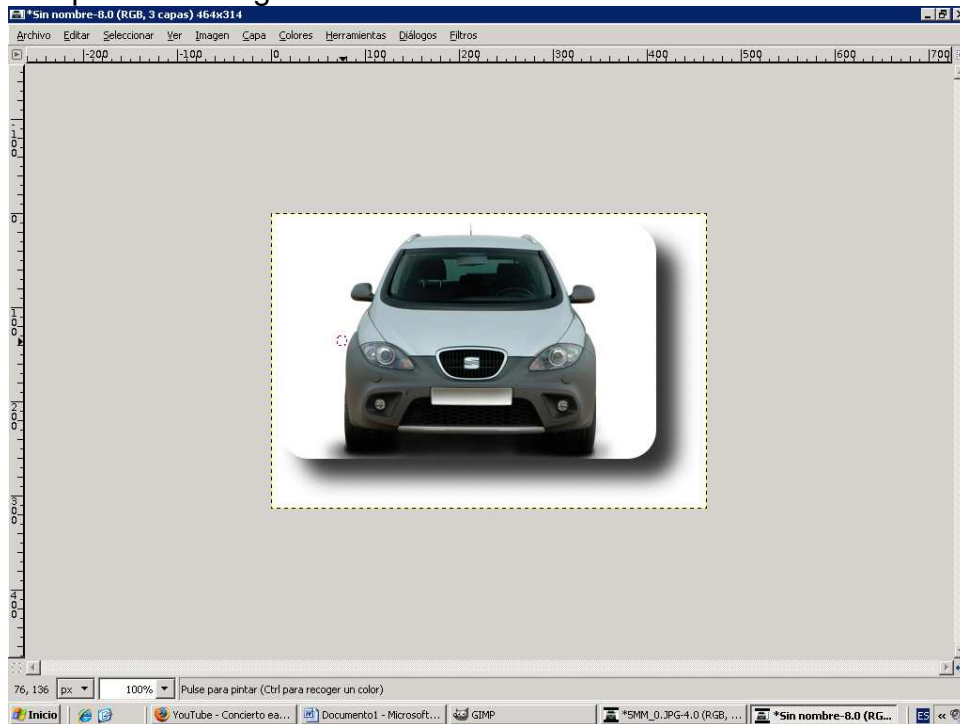


I poses un al teu gust.

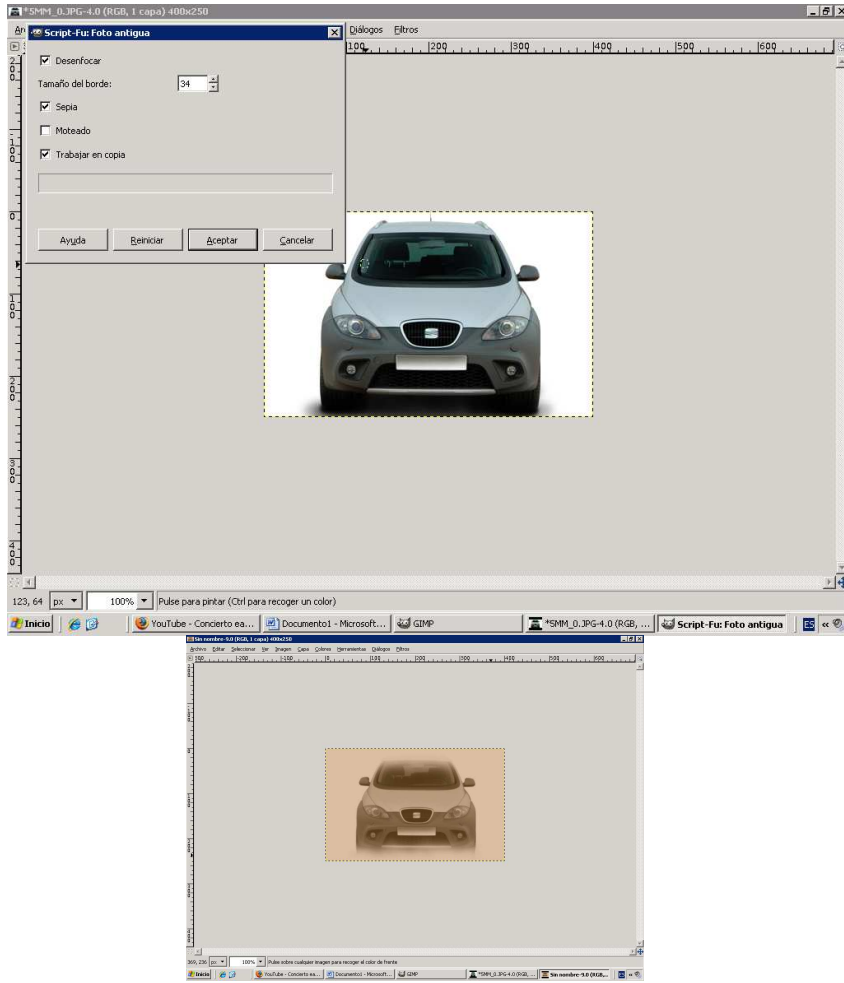
## 'Esquinas redondeadas':



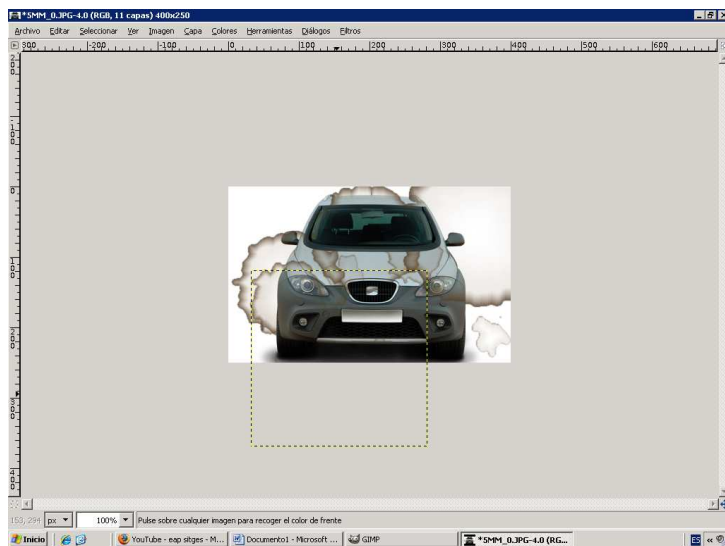
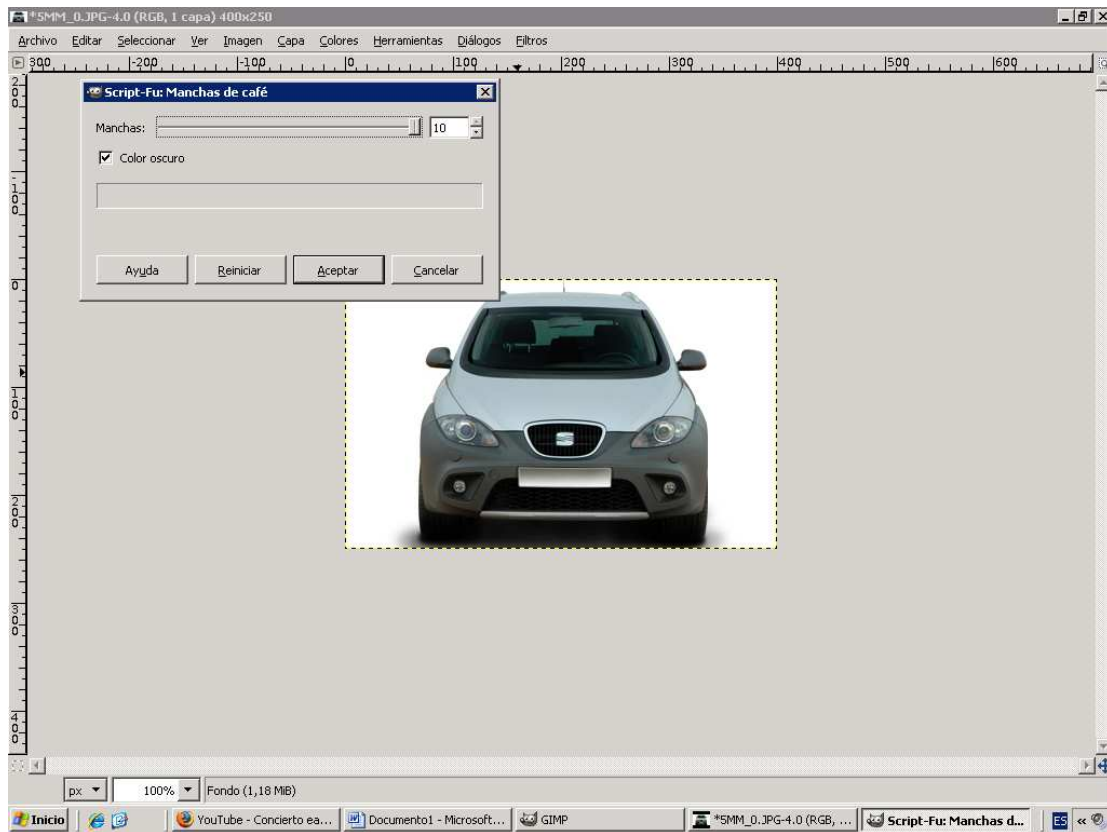
## I ho poses al teu gust:



# “Foto antigua”:



# 'Manchas de café':



Sembla que t'hagi caigut café a la foto.